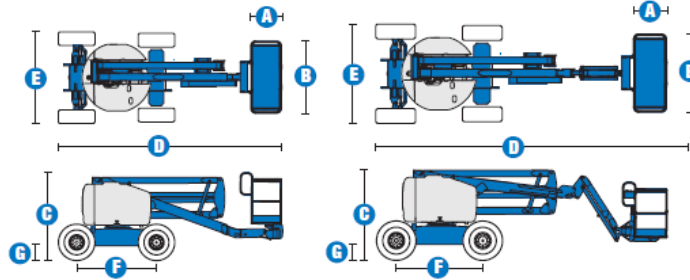
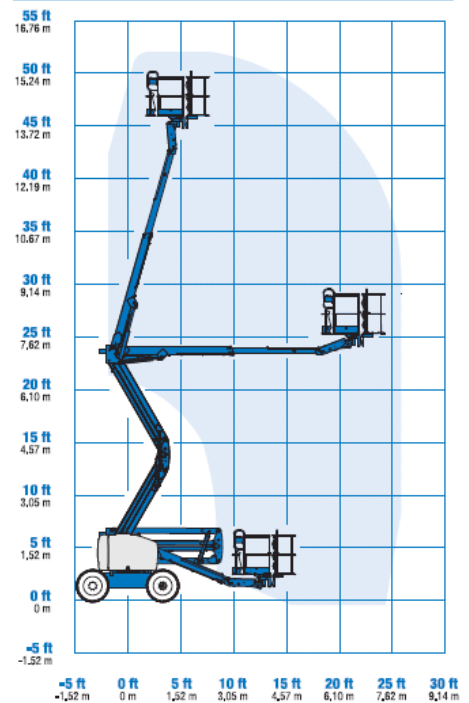


Specifications



RANGE OF MOTION Z™-45/25 RT



MODELS	Z™-45/25 RT		Z™-45/25J RT	
	Metric	US	Metric	US
Working height maximum*	16 m	51 ft 11 in	16.07 m	52 ft 2 in
Platform height maximum*	14 m	45 ft 11 in	14.07 m	46 ft 2 in
Horizontal reach maximum*	7.62 m	25 ft	7.65 m	25 ft 1 in
Up-and-over clearance maximum	7.16 m	23 ft 6 in	7.37 m	24 ft 2 in
A Platform length	76 cm	2 ft 6 in	76 cm	2 ft 6 in
B Platform width	1.83 m	6 ft	1.83 m	6 ft
C Height - stowed	2.11 m	6 ft 11 in	2.11 m	6 ft 11 in
D Length - stowed	5.56 m	18 ft 3 in	6.83 m	22 ft 5 in
E Width	2.29 m	7 ft 6 in	2.29 m	7 ft 6 in
F Wheelbase	2.03 m	6 ft 8 in	2.03 m	6 ft 8 in
G Ground clearance - centre	39 cm	1 ft 3.5 in	39 cm	1 ft 3.5 in

PRODUCTIVITY

Lift capacity	227 kg	500 lbs	227 kg	500 lbs
Platform rotation	180°	180°	160°	160°
Vertical jib rotation	-	-	135° (+78°/-57°)	135°
Turntable rotation	355° non-continuous		355° non-continuous	
Turntable tailswing	zero	zero	zero	zero
Drive speed - stowed	8 km/h	5 mph	8 km/h	5 mph
Drive speed - raised **	1.1 km/h	0.68 mph	1.1 km/h	0.61 mph
Gradeability - 2WD - stowed***	30%	30%	30%	30%
Gradeability - 4WD - stowed***	45%	45%	45%	45%
Turning radius - inside	1.70 m	5 ft 6 in	1.70 m	5 ft 6 in
Turning radius - outside	4.5 m	14 ft 9 in	4.5 m	14 ft 9 in
Controls	12 V DC proportional		12 V DC proportional	
Tyres	355/55 D625		355/55 D625	

POWER

Power source	Ford DSG-423 4 cylinder petrol/LPG 75 hp (56 kW) Deutz diesel D 2011 L03i cylinder diesel 48 hp (35.8 kW) Perkins diesel 404-C22 4-cylinder diesel 51 hp (38 kW)			
Auxiliary power unit	12 V DC	12 V DC	12 V DC	12 V DC
Hydraulic tank capacity	90.8 L	24 gal	90.8 L	24 gal
Fuel tank capacity	64.4 L	17 gal	64.4 L	17 gal

WEIGHT****

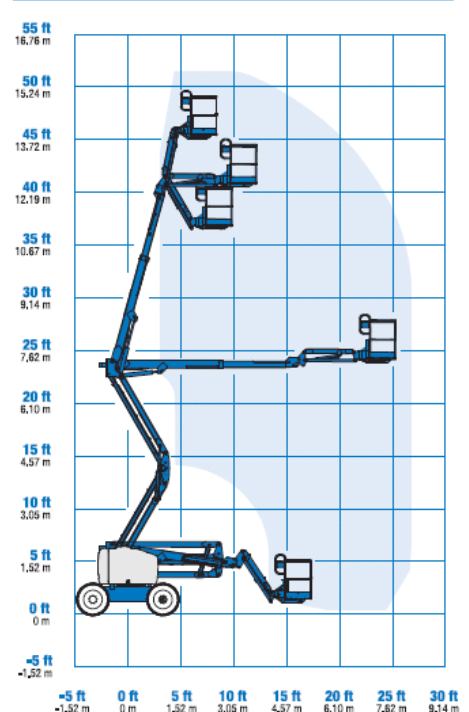
CE 2WD (air tyres)	6,203 kg	13,675 lbs	6,486 kg	14,300 lbs
CE 4WD (air tyres)	6,294 kg	13,875 lbs	6,577 kg	14,500 lbs
CE 2WD (foam filled tyres)	6,550 kg	14,440 lbs	6,833 kg	15,064 lbs
CE 4WD (foam filled tyres)	6,641 kg	14,641 lbs	6,924 kg	15,265 lbs

STANDARDS COMPLIANCE

 CE EN280, PB-10-611-03

* The metric equivalent of working height adds 2 m to platform height. U.S. adds 6 ft to platform height.
 ** In lift mode (platform raised), the machine is designed to operate on firm, level surfaces only.
 *** Gradeability applies to driving on slopes. See Operator's Manual for details regarding slope ratings.
 **** Weight will vary depending on options and/or country standards.

RANGE OF MOTION Z™-45/25J RT



Features

EASILY CONFIGURED TO MEET YOUR NEEDS

PLATFORM OPTIONS

- Steel 1.83 m (6 ft) (standard)
- Steel 1.22 or 1.52 m (4 or 5 ft)

JIB OPTIONS

- Non-jib
- 1.52 m (5 ft) jib boom

POWER

- Deutz Diesel 48 hp (35.8 kW)
- Ford petrol/LPG 75 hp (56 kW)
- Perkins diesel 51 hp (38 kW)

DRIVE OPTIONS

- 2 x 4
- 4 x 4

AXLE OPTIONS

- Oscillating (standard on 4WD)
- Non-oscillating

TYRE OPTIONS

- Rough terrain air-filled (standard)
- Rough terrain foam-filled
- Rough terrain non-marking (air or foam-filled)

STANDARD FEATURES

MEASUREMENTS

Z™-45/25 RT

- 16 m (51 ft 11 in) working height
- 7.62 m (25 ft) horizontal reach
- 7.16 m (23 ft 6 in) up-and-over clearance
- Up to 227 kg (500 lb) lift capacity

Z™-45/25J RT

- 16.07 m (52 ft 2 in) working height
- 7.65 m (25 ft 1 in) horizontal reach
- 7.16 m (23 ft 6 in) up-and-over clearance
- Up to 227 kg (500 lb) lift capacity

PRODUCTIVITY

- Self-levelling platform
- Hydraulic platform rotation
- Fully proportional controls
- Thumb rocker steer
- Drive enable
- AC power cord to platform
- Horn
- Hour meter
- Tilt alarm
- Descent alarm
- 355° non-continuous turntable rotation
- Positive traction drive
- Two-speed wheel motors
- Certified load sensor



STANDARD FEATURES cont.

POWER

- All engines are emission compliant
- 12 V DC auxiliary power
- Engine protection package
- Deutz intake air heater
- Swing-out engine tray

OPTIONS & ACCESSORIES

PRODUCTIVITY

- Platform swing gate
- Half-mesh platform inserts with swing gate
- Platform top auxiliary rail
- Air line to platform
- Fire resistant hydraulic oil
- Biodegradable hydraulic oil
- Aircraft protection package*
- Basic hostile environment kit
- Tool tray
- Fluorescent tube caddy
- Pipe cradle (pair)
- Alarm package (flashing beacon and travel alarm)
- Panel cradle package
- Platform work lights
- Lockable platform control box cover

POWER

- Engine gauge package
- AC generator packages (110V/60Hz, 3000 W or 220V/50Hz, 2500 W)
- Diesel scrubber muffler with spark arrester
- LPG tank 15.19 kg (33.5 lb) capacity
- Additional LPG tank with carrier

*Reduces platform capacity to 200 kg (440 lbs), only available on Jib models

UK

The Maltings
Wharf Road
Grantham NG31 6BH
UK
Tel: +44 (0)1476 584333
Fax: +44 (0)1476 584334

France

10, ZA de la Croix St. Mathieu
28320 Gallardon
France
Tel: +33 (0)2 37 26 09 99
Fax: +33 (0)2 37 26 09 98

Germany

Finienweg 3
28832 Achim/Bremen
Germany
Tel: +49 (0)4202 8852-0
Fax: +49 (0)4202 8852-25

Spain

Gaià 31, Pol. Ind. Plá d'en Coll
08110 Montcada i Reixac
Barcelona
Spain
Tel: +34 93 572 50 90
Fax: +34 93 572 50 91

Scandinavia

Aröds industriväg 34
422 43 Hisings Backa
Sweden
Tel: +46 31 57 51 00
Fax: +46 31 57 51 04

Middle East

Terex Middle East
PO Box 282325, Dubai
U.A.E.
Tel: +971 4 885 8030
Fax: +971 4 885 6364
Email: awp.infome@terex.com

Genie United States

18340 NE 76th Street
P.O. Box 97030
Redmond, WA
USA 98073-9730
Tel: +1 425 881-1800
Fax: +1 425 883-3475

Email: AWP-InfoEurope@terex.com

Distributed By:


douwes
materieel op maat

De Rysloane 2
9281 KM Harkema
Tel : 0512-364499
Fax : 0512-365152
Email : info@materieel.com
Web : www.materieel.com

Effective date: June, 2009. Product specifications and prices are subject to change without notice or obligation. The photographs and/or drawings in this document are for illustrative purposes only. Refer to the appropriate Operator's Manual for instructions on the proper use of this equipment. Failure to follow the appropriate Operator's Manual when using our equipment or to otherwise act irresponsibly may result in serious injury or death. The only warranty applicable to our equipment is the standard written warranty applicable to the particular product and sale and we make no other warranty, expressed or implied. Products and services listed may be trademarks, service marks or trade-names of Terex Corporation, Genie Industries, Inc. and/or their subsidiaries in the U.S.A. and many other countries. All rights are reserved. Terex is a Registered Trademark of Terex Corporation in the U.S.A. and many other countries. Genie is a Registered Trademark of Genie Industries, Inc in the U.S.A. and many other countries. Genie is a Terex Company. Copyright 2009 Terex Corporation